



# MY EXPERIENCE AT *THE LEVOY THEATRE*

## HANDBOOK





## ARRIVING AT THE THEATRE

Welcome to Levoy Theatre!

This is what our building looks like from the outside.

You can enter through the front doors to begin your theater experience.

Most of the time, the doors will be open one our before the show starts.



## PICKING UP TICKETS

Our friendly staff at the box office and pick-up window are ready to help you.

If I need to purchase or pick up tickets, visit this area first. The first set of windows, inside the vestibule, is for purchasing tickets. The staff person will print my tickets for me.

If I walk inside the next set of doors, I will see the "Will Call" window on my right, where

I can pick up tickets that were ordered ahead of time.

Sometimes there is a line to wait for tickets.

Whether I buy my tickets right now, or if I pick them up at "Will Call," I will need those tickets to be scanned in order to get into the auditorium to see the show, so I will hold onto them.



## VOLUNTEERS

Levoy volunteers, dressed in black pants and white shirts, are here to help with any questions I have.

Just look for someone in this uniform!



## EXPLORING THE LOBBY

This is our lobby, where you'll find concessions, bathrooms, sensory-friendly tools, and TVs to watch the show if I prefer to stay here.

Sometimes, I may need to wait in the lobby before the show starts.  
The lobby can be crowded and noisy.

There is a quiet area upstairs in the mezzanine if I need a break from the noise and crowds.



## CONCESSIONS AREA

If I want a snack or drink, I can visit the concession stand here and buy something to eat or drink.

I can bring my refreshments into the theater before the performance begins.



## BATHROOMS

Bathrooms are located on two levels—downstairs in the basement (take the stairs behind the sensory area, or take the elevator), and upstairs near the mezzanine and balcony (take the main stairs to the mezzanine, or take the elevator).

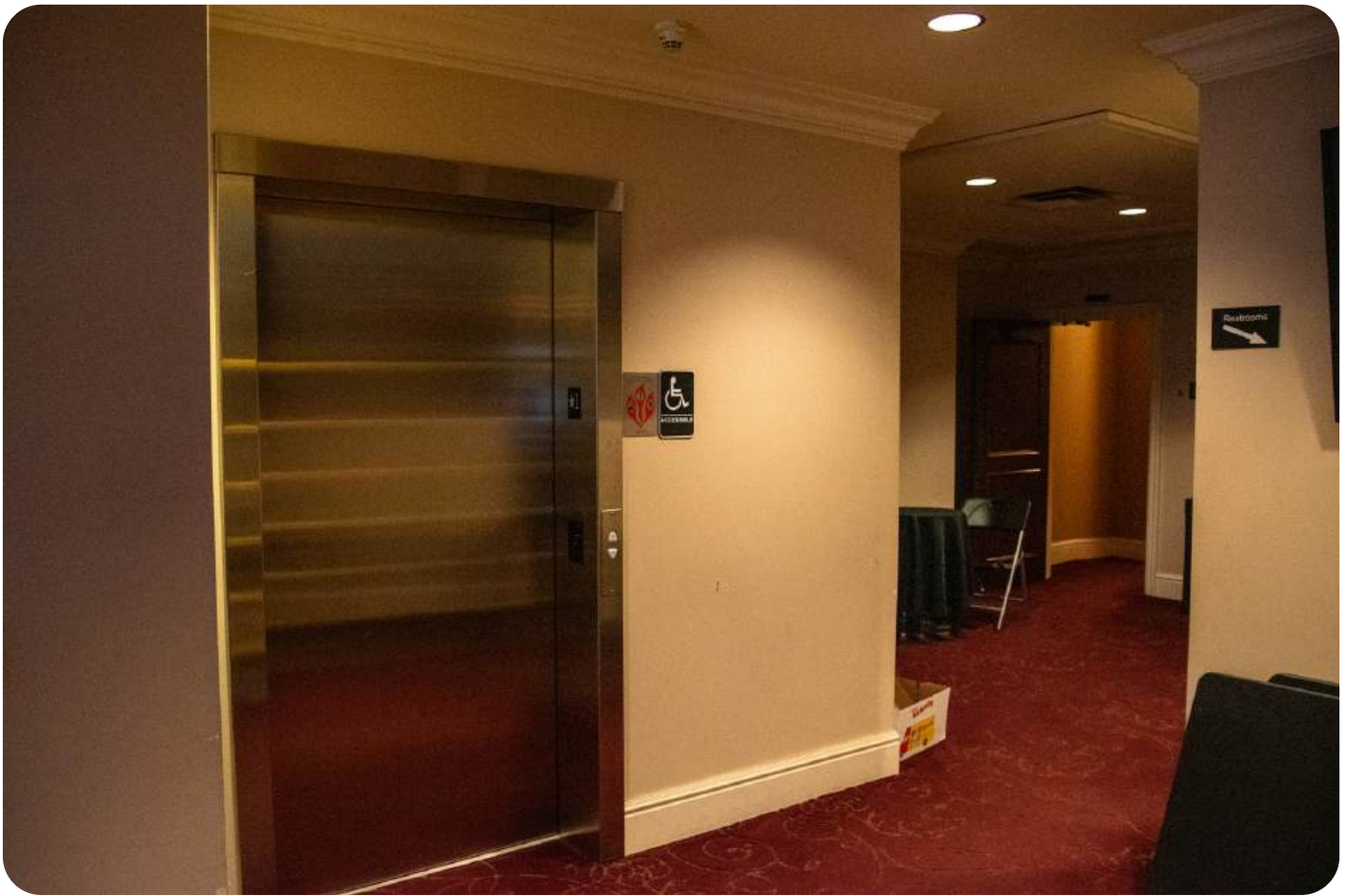


## TAKING THE STAIRS

The stairs are located in the lobby as soon as I enter.

It will take me to the mezzanine, the upper-level balcony seating, and the upstairs bathrooms.





## TAKING THE ELEVATOR

The elevator is located in the lobby to my left.

It will take me to the basement bathrooms, the mezzanine quiet area, and the upper-level balcony seating.



## SCANNING YOUR TICKETS

I will show my ticket to the volunteer usher to enter the theatre.

The usher will scan my ticket using a scanner. The scanner will make a beeping noise.

Feel free to leave and return to the auditorium as needed during the performance.



## RECEIVING PROGRAM

The usher will give me a program book.

A program book tells me about the show and the actors in the show.



## MEZZANINE

*(Quiet, Sensory, and Activity Area)*

For kids who need movement or quiet activities, there is a sensory area with space to color, and fidget toys in the mezzanine. You can take the stairs or the elevator.

The mezzanine serves as a quiet space if I need a break from the show. I can go up here to relax in a peaceful environment, using either the stairs or the elevator.



## **WATCHING THE SHOW IN THE LOBBY**

If I prefer to watch the show from outside the auditorium, the lobby TVs will stream the performance live.



## VIEW FROM THE AUDIENCE

Here's what the stage looks like from different seats.

I can choose the spot that feels best for me, and I can move seats to another if I decide to move to another seat.



## LEAVING THE THEATRE

When the show ends, I will exit through the same doors.

We hope you had a wonderful experience and look forward to seeing you again!